

Transportable Test Cube

World Leader in Stretch-Film Technology!



**FILM FORCE TEST
ASTM D4649-03**

The most-advanced equipment for testing wrapping performance

- ✓ The Highlight Test Cube will measure and record the performance of the stretch film and wrapping equipment faster and more accurately than any other system available.

Test the performance of your systems to establish base-lines

Refine performance to establish benchmarks and improve your stretch wrapping operation

Use in the field and in the lab

Standardize and maintain system improvements

Can be used on any stretch wrapper with any film

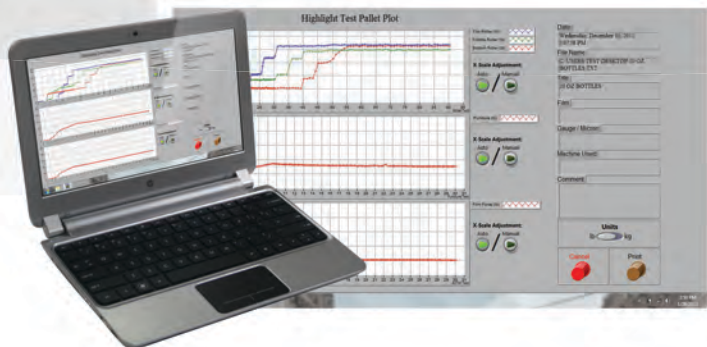
Test containment force and puncture resistance of film as it's applied to the load



HIGHLIGHT
INDUSTRIES, INC.

Transportable Test Cube

World Leader in Stretch-Film Technology!



System details:

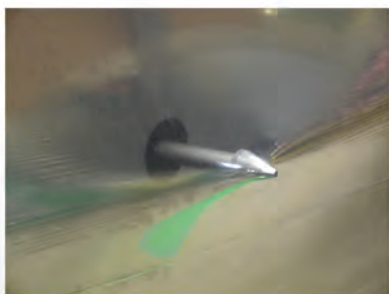
Designed for easy and reliable use, with your operating methods in mind.

- Forklift portable
- Super heavy duty steel construction
- 44" x 44" x 59"
- System operated by remote notebook computer
- Highlight's software has been tested and refined over 20 years
- 10 hours run time on one charge

Containment Force test at pallet corner:

Containment force is the most important metric to consider when determining load security, the corner test measures at the top, middle, and bottom to record both the total force and uniformity of application.

- Containment measured at corners to collect highest numbers and largest variance, easier to see impact of things like changing film or wrap settings
- Check for weak spots in wrap profile
- Can collect data after wrap cycle completes or throughout wrap process to test for containment force per layer applied



Puncture test:

Tests puncture resistance of a film as it's applied under real-world conditions.

- The film is wrapped onto the frame, then the probe extends out into the film to puncture
- Puncture most often occurs at the corners of the Cube and when units are inset from each other layer to layer.
- Data collected with a highly accurate load cell
- Positioned at 10" from top and 18" from left hand corner, per ASTM spec

Containment force on 6" disc:

This is the industry standard for measuring containment force, replacing human error with automation and the high accuracy of calibrated load cells.

- Tests per ASTM D 4649-03 Annex A1 testing standards: 10" from top, 18" from left, extends out 4", uses 6" diameter disc
- Can collect data after wrap cycle completes or throughout wrap process to test for containment force per layer applied



HIGHLIGHT
INDUSTRIES, INC.